

Crossing the 'Pond'



Crossing the 'Pond'

What the Pilots get up to

Mike Morison

Crossing the Pond - Introduction

Pre Flight

Departure

En Route

Arrival

Post Flight.

Crossing the Pond - Pre Flight

Crew meet

Ops brief

Check NOTAMs

Crossing the Pond - Pre Flight

Crew meet

Weather check

Route Synopsis

Airfield Forecasts

Crossing the Pond - Pre Flight

Crew meet

Weather check

Jetplan

Fuel required

Route,

Crossing the Pond - Pre Flight

Crew meet

Weather check

Jetplan

Fuel required

Route

Ac Type, ZFW, Time, Dep/Arr Airfields

Crossing the Pond - Pre Flight

Crew meet

Weather check

Jetplan

Flight Plan,

Flight Plan

FLIGHT PLAN PLAN DE VOL	
PRIORITY Priorité <<= FF =>	ADDRESSEE(S) Destinataire(s)
FILING TIME Heure de dépôt	ORIGINATOR Expéditeur
SPECIFIC IDENTIFICATION OF ADDRESSEE(S) AND/OR ORIGINATOR Identification précise du(des) destinataire(s) et/ou de l'expéditeur	
3 MESSAGE TYPE Type de message <<= (FPL	7 AIRCRAFT IDENTIFICATION Identification de l'aéronef
8 FLIGHT RULES Règles de vol	TYPE OF FLIGHT Type de vol
9 NUMBER Nombre	TYPE OF AIRCRAFT Type d'aéronef
10 EQUIPMENT Équipement	WAKE TURBULENCE CAT. Cat. de turbulence de sillage
13 DEPARTURE AERODROME Aérodrome de départ	TIME Heure
15 CRUISING SPEED Vitesse croisière	LEVEL Niveau
	ROUTE Route
16 DESTINATION AERODROME Aérodrome de destination	TOTAL EET Durée totale estimée HR MIN
18 OTHER INFORMATION Renseignements divers	ALTN AERODROME Aérodrome de dégagement
	2ND ALTN AERODROME 2 ^e aérodrome de dégagement
SUPPLEMENTARY INFORMATION (NOT TO BE TRANSMITTED IN FPL MESSAGES) Renseignements complémentaires (À NE PAS TRANSMETTRE DANS LES MESSAGES DE PLAN DE VOL DÉPOSÉ)	
19 ENDURANCE Autonomie E / HR MIN	PERSONS ON BOARD Personnes à bord P /
SURVIVAL EQUIPMENT/Équipement de survie S / P	EMERGENCY RADIO Radio de secours R / U V V E
POLAR Polaire	DESERT Désert
MARITIME Maritime	JUNGLE Jungle
JACKETS/Gilets de sauvetage J / L	FLUORES Fluores
DINGHIES/Canots D /	UHF UHF
NUMBER Nombre	CAPACITY Capacité
COVER Couverture	COLOUR Couleur
AIRCRAFT COLOUR AND MARKINGS Couleur et marques de l'aéronef C /	
REMARKS Remarques A /	
PILOT-IN-COMMAND Pilote commandant de bord N /	
FILED BY / Déposé par C /	
	SPACE RESERVED FOR ADDITIONAL REQUIREMENTS Espace réservé à des fins supplémentaires

Crossing the Pond - Pre Flight

Crew meet

Weather check

Jetplan

Flight Plan

Prepare 'George' (Autopilot)

Crossing the Pond - Pre Flight

Crew meet

Weather check

Jetplan

Flight Plan

Prepare 'George'

Performance – Decision speeds.

Crossing the Pond - Departure

Automatic Terminal Information Service – ATIS

Latest weather

Active runways

Approach information

Any other important info

Code Letter

Crossing the Pond - Departure

Automatic Terminal Information Service - ATIS

Check 'George'

Crossing the Pond - Departure

Automatic Terminal Information Service - ATIS

Check 'George'

Start Clearance

Initiates Flight Plan

Crossing the Pond - Departure

Automatic Terminal Information Service - ATIS

Check 'George'

Start Clearance

Passenger Announcements

Crossing the Pond - Departure

Automatic Terminal Information Service - ATIS

Check 'George'

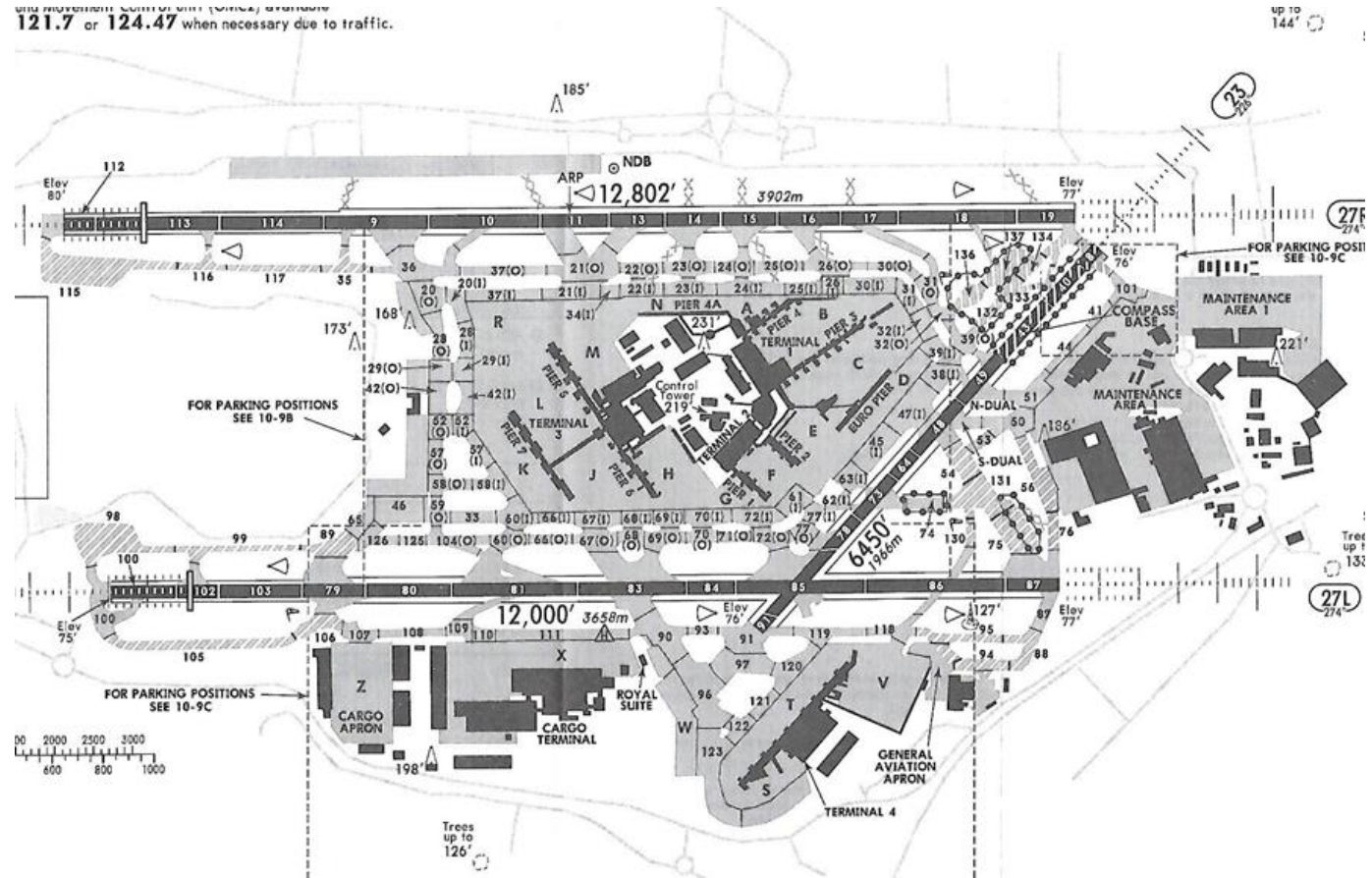
Start Clearance

Passenger Announcements

Taxi,

LHR Taxiways

Complex!



Crossing the Pond - Departure

Automatic Terminal Information Service - ATIS

Check 'George'

Start Clearance

Passenger Announcements

Taxi

Take-Off Clearance

Crossing the Pond - Departure

Automatic Terminal Information Service - ATIS

Check 'George'

Start Clearance

Passenger Announcements

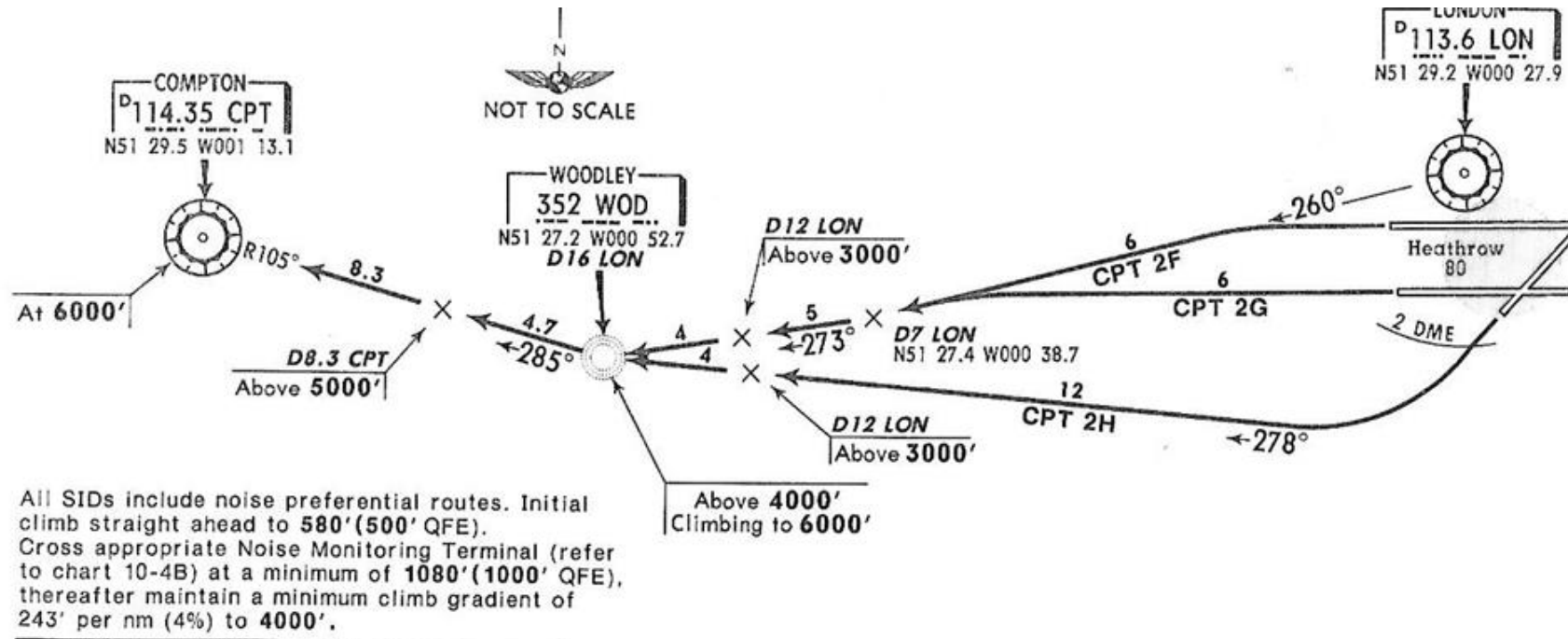
Taxi

Take-Off Clearance

Standard Instrument Departure – SID,

Compton SID

Runway specific.

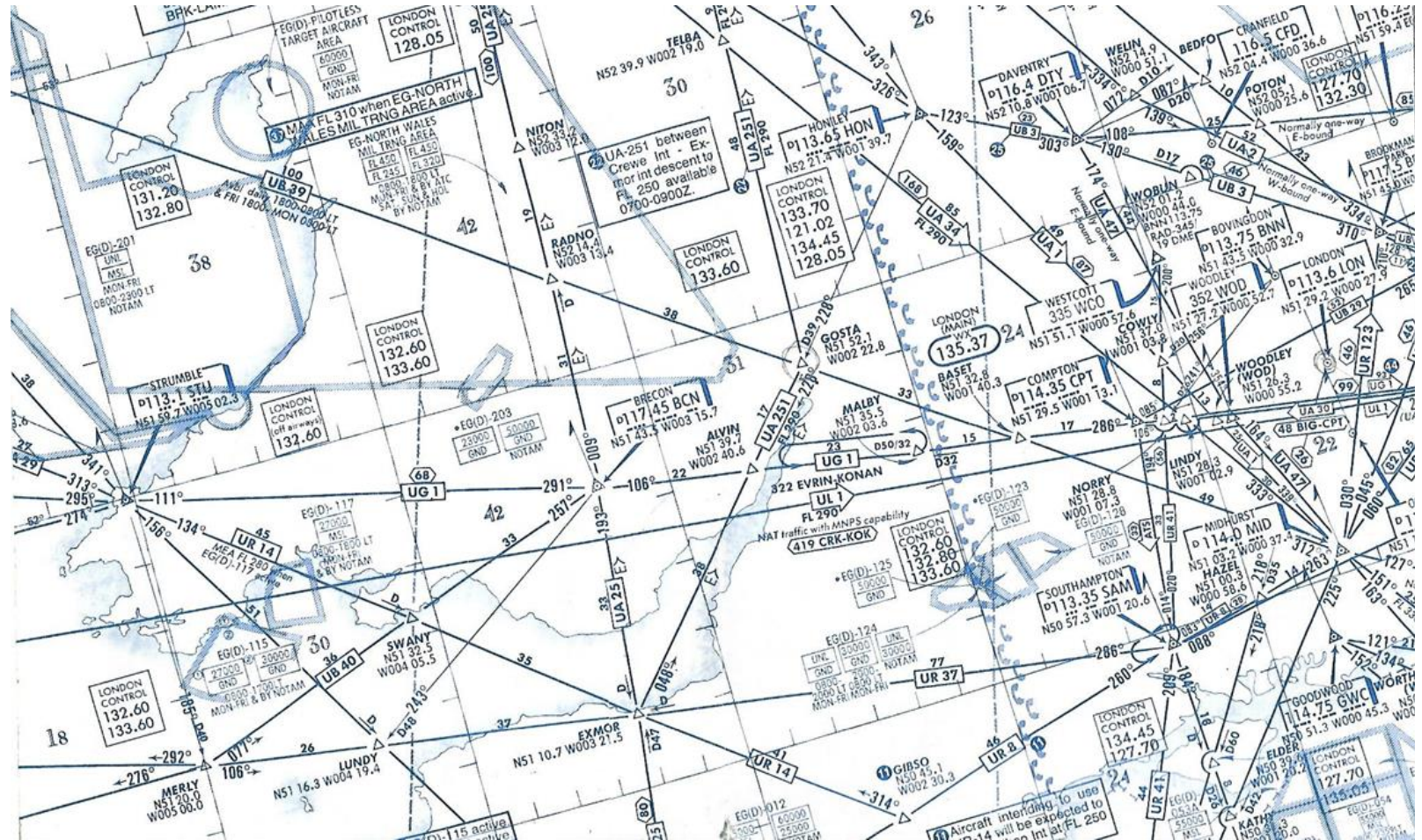


Crossing the Pond – En Route

Join airways,

Crossing the Pond – En Route

Airways
over
Southern
England



Crossing the Pond – En Route

Airways

Oceanic Clearance

Crossing the Pond – En Route

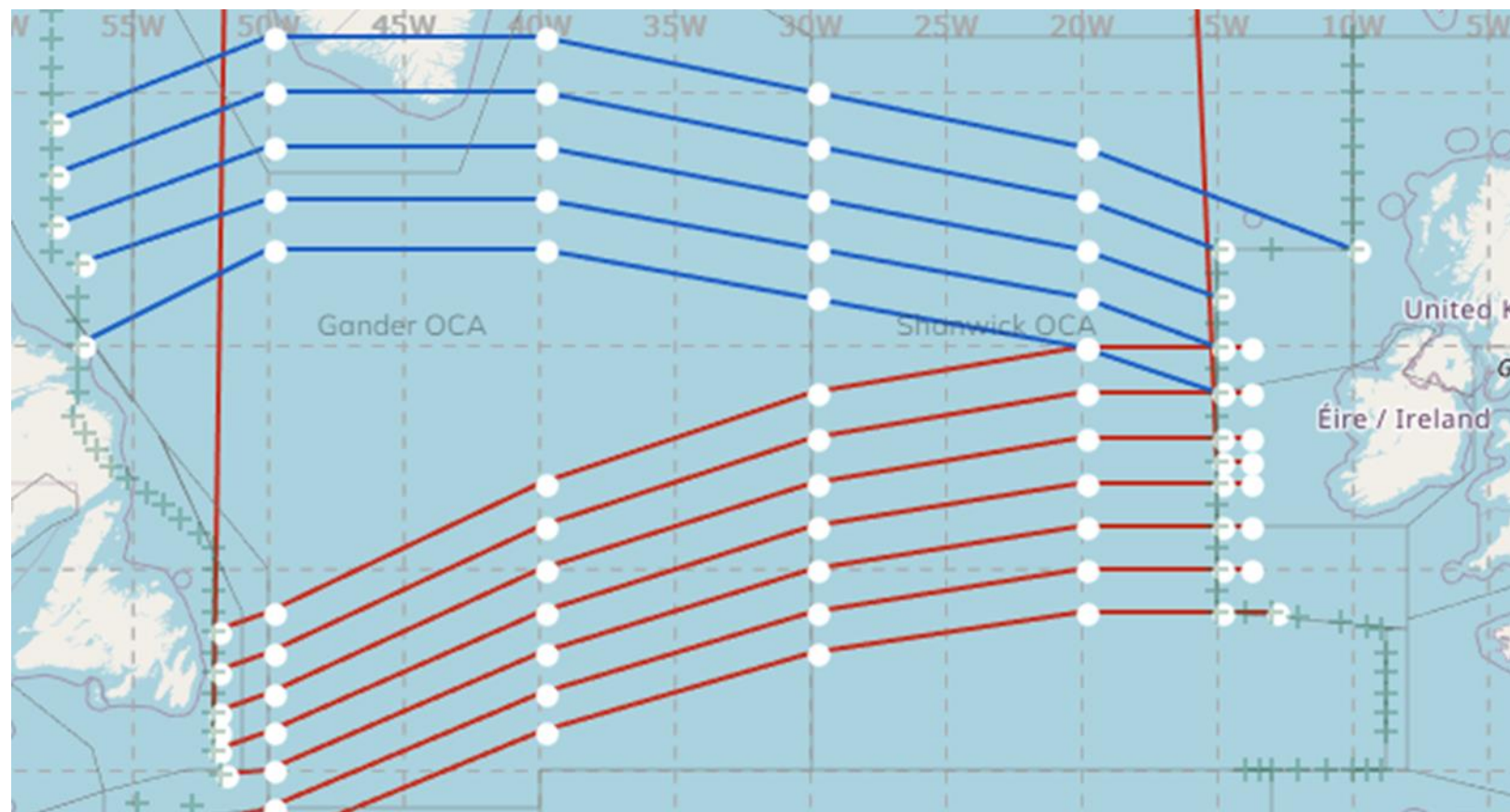
Airways

Oceanic Clearance

North Atlantic (NAT) Routes,

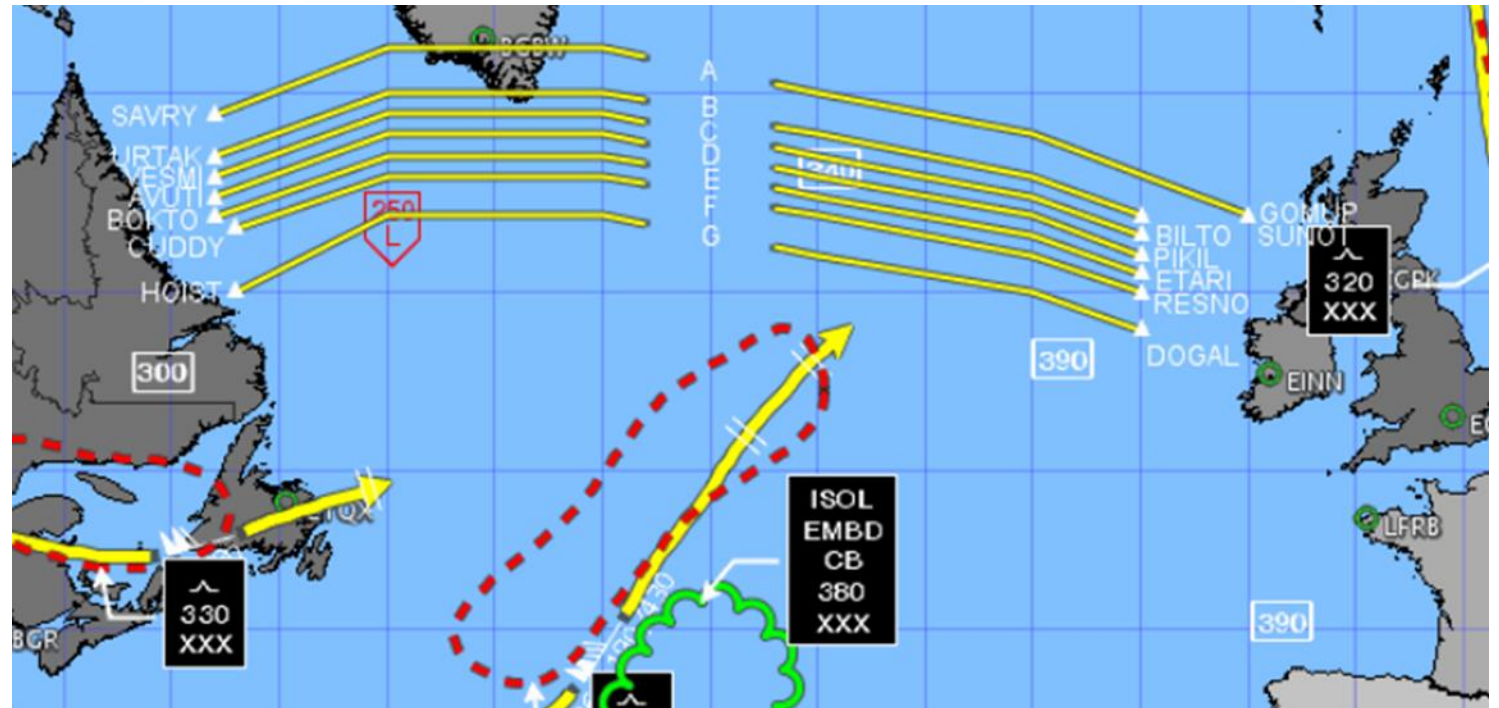
North Atlantic (NAT) Routes

NAT Tracks



North Atlantic (NAT) Routes

NAT Tracks



North Atlantic (NAT) Routes

NAT Tracks



Crossing the Pond – En Route

Airways

Oceanic Clearance

North Atlantic (NAT) Routes

Position Reports

Crossing the Pond – En Route

Airways

Oceanic Clearance

North Atlantic (NAT) Routes

Position Reports

Height/Route changes

Crossing the Pond – En Route

Airways

Oceanic Clearance

North Atlantic (NAT) Routes

Position Reports

Height/Route changes

Weather.

Crossing the Pond – Arrival

ATIS

Crossing the Pond – Arrival

ATIS

Ops Check

Crossing the Pond – Arrival

ATIS

Ops Check

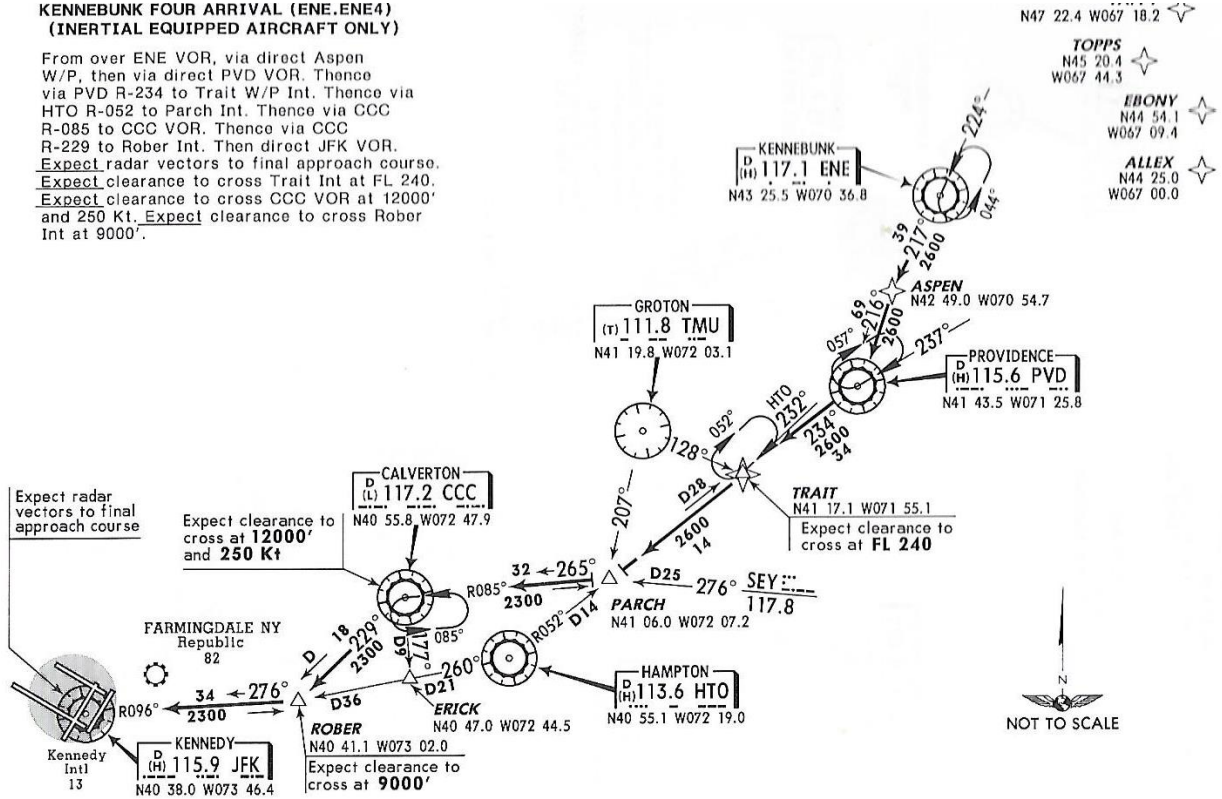
Standard Arrival – STAR,

New York - STAR

Kennebunk Four Arrival

**KENNEBUNK FOUR ARRIVAL (ENE.ENE4)
(INERTIAL EQUIPPED AIRCRAFT ONLY)**

From over ENE VOR, via direct Aspen W/P, then via direct PVD VOR. Thence via PVD R-234 to Trait W/P Int. Thence via HTO R-052 to Parch Int. Thence via CCC R-085 to CCC VOR. Thence via CCC R-229 to Rober Int. Then direct JFK VOR. Expect radar vectors to final approach course. Expect clearance to cross Trait Int at FL 240. Expect clearance to cross CCC VOR at 12000' and 250 Kt. Expect clearance to cross Rober Int at 9000'.



Crossing the Pond – Arrival

ATIS

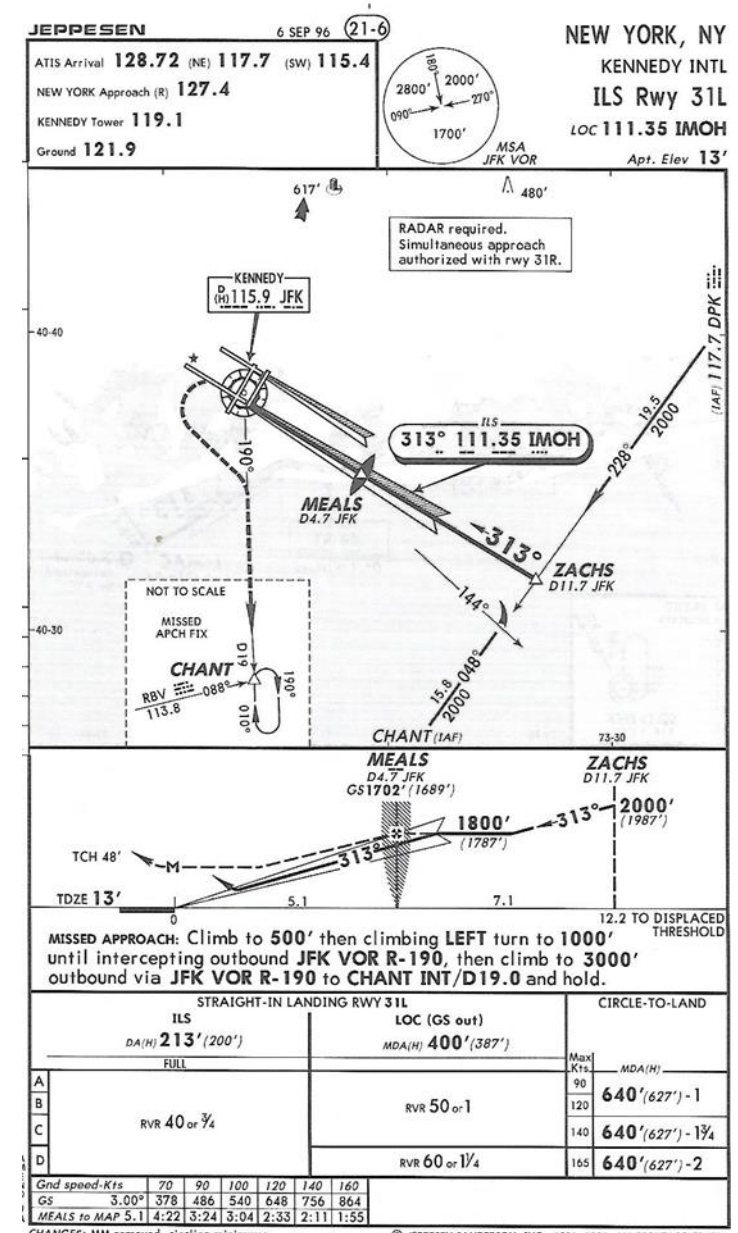
Ops Check

Standard Arrival - STAR

Runway Approach & Landing,

New York Runway Approach

ILS Rwy 31L



Crossing the Pond – Arrival

ATIS

Ops Check

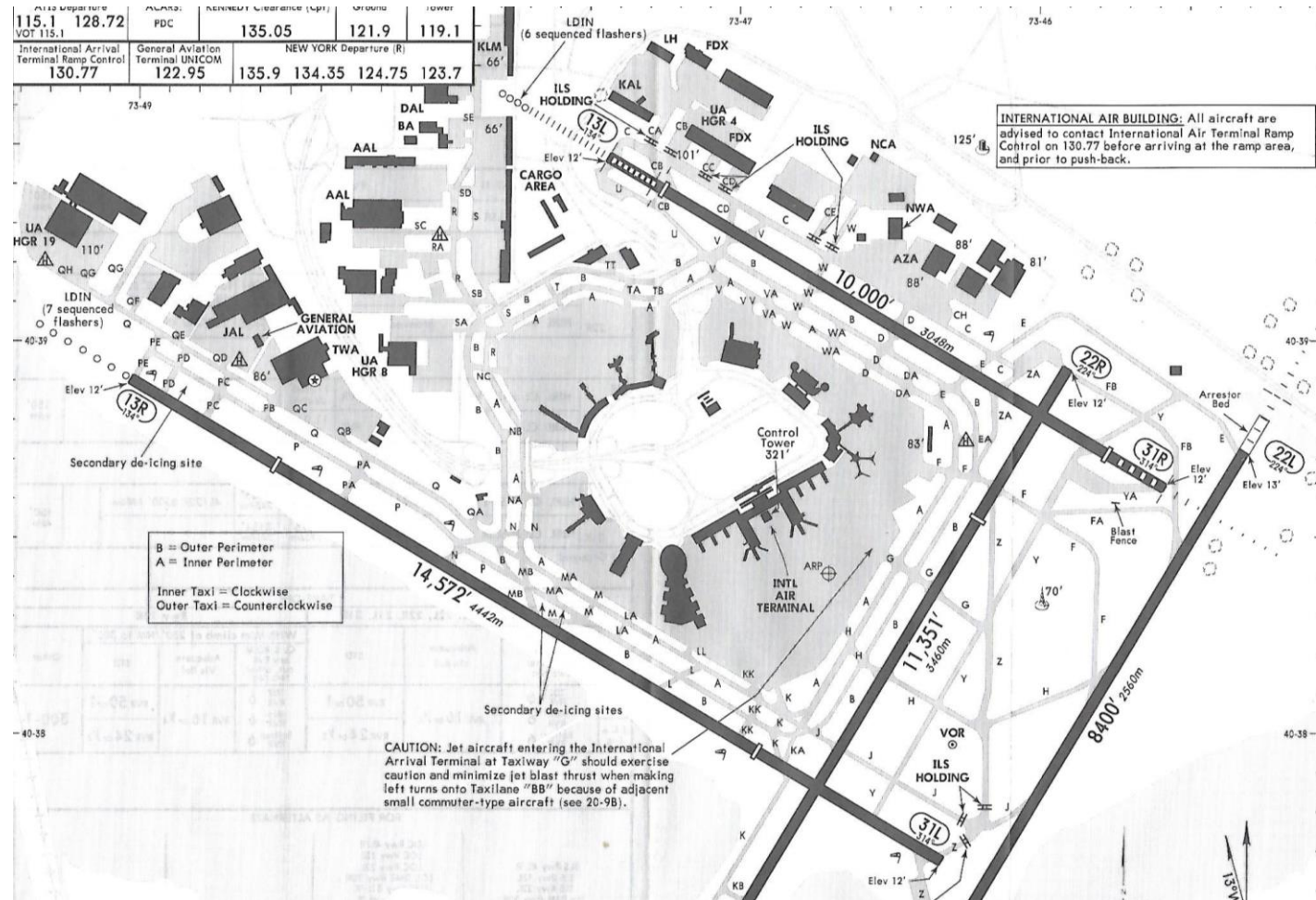
Standard Arrival - STAR

Runway Approach & Landing

Taxi to Stand,

JFK Taxiways

Again
Complex.



Crossing the Pond – Post Flight

Debrief

Aircraft problems?

Crossing the Pond – Post Flight

Debrief

Hotel & Bar!

Crossing the Pond - Summary

Pre Flight

Departure

En Route

Arrival

Post Flight.

Any Questions?